

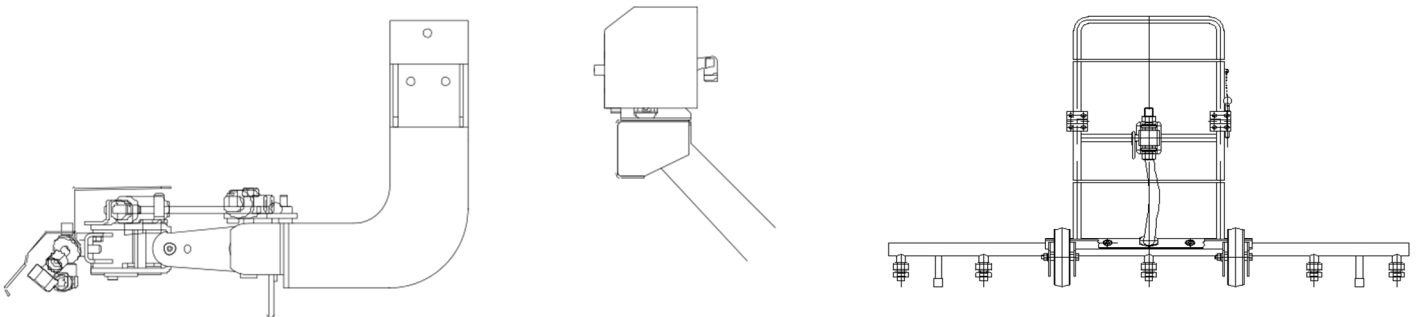
# PAVEMENT MAINTAINING TRUCK



## Main Parameters

Items		FLM5030TYHCC6
GVW	kg	2840
Wheelbase	mm	2700
Payload Weight	kg	1000
Upper Weight	kg	695
Upper Transportation Dimensions	mm	2900×1580×2480
Selectable Of Chassis Brand		CHANGAN/SAIC
High Pressure Water Pump Model		CC38/15S
High Pressure Water Pump Pressure	MPa	15
High Pressure Water Pump Flow	L/min	38
Auxiliary Engine Model		Briggs & Stratton 25T2
Auxiliary Engine Power	kW	10
Water Tank Volume	m <sup>3</sup>	1.3
Cleaning Width	m	≥1.5
Front Sprayer Pressure	MPa	≥9

## Spray Nozzle



# Base Specification

## Water pump:

- The high-pressure water pump and its driving gasoline engine are located at the back of the water tank for easy operation and maintenance. The opening and closing of the high-pressure water pump can be operated remotely in the cab.
- High pressure and small flow imported pump is adopted, with strong jet water flow and long continuous operation time.

## Body:

- The clean water tank is an integral weldment with strong seismic resistance, no deformation and corrosion. The water tank is equipped with a low water level sensing alarm device and a water level gauge to prevent the high-pressure water pump from being damaged due to water shortage.
- In order to adapt to the harsh working environment, all fasteners are galvanized. All structural parts are acid pickling and phosphating, outdoor resin powder, high temperature electrostatic spraying process, strong adhesion, corrosion resistance, weather resistance, strong corrosion resistance.

## Spraying water frame:

- The front spray frame is hydraulically controlled, which can realize 12 ° up and down rotation and 20 ° left and right yaw respectively. It can be controlled in the cab and is easy to operate.

## Other advantages:

- The car is also equipped with a light, small and water broom with anti-sputter protective cover, which can clean and brush the rest stool, narrow platform, wall and other areas on the road.
- Equipped with a self-recovery reel device, it can realize long-distance cleaning.

## Cleaning device:

- The cleaning device is composed of a front cleaning device, a column single point cleaning device, a manual spray gun device, a hand push spray pipe cleaning device, etc. the cleaning function is diversified, which can meet the cleaning and maintenance work of roads with different pollution levels.
- The operation of the column single point cleaning device is all electric control, and the driver can complete the operation in the cab. The utility model can swing up, down, left and right in all directions, which is suitable for the removal of local health dead angle of the road.
- After the manual high-pressure spray gun, equipped with a 20 meter long hose, a wide range of operations. In order to cope with various working conditions, four kinds of professional nozzles are also equipped, which are the key to street advertisements.
- The hand push nozzle cleaning device can clean the road surface and blind joint in the area where the vehicle can not pass by using the high pressure and small flow cleaning water curtain ejected by the nozzle. The device adopts foldable structure, which is convenient, fast, water-saving and environmental protection.

## Monitoring device:

- The front monitoring device is equipped with a color LCD in the cab to observe the road conditions and cleaning effect at any time.

## **Optional device:**

- Optional stainless steel tank.
- According to the actual operation requirements, the vehicle can also be equipped with a variety of practical devices, such as rear up spray device and rear down spray device for cooling and dust reduction, adjusting air humidity, side washing guardrail device with large water flow, high pressure and anti-collision function.
- HONDA GX390 gasoline engine.
- Back down high-pressure hedge
- Pneumatic pipe cleaning device (air blowing device).
- Imported long car washing gun.
- Manual universal wheel spray frame.
- High pressure water pump: XWL 41.20N.