

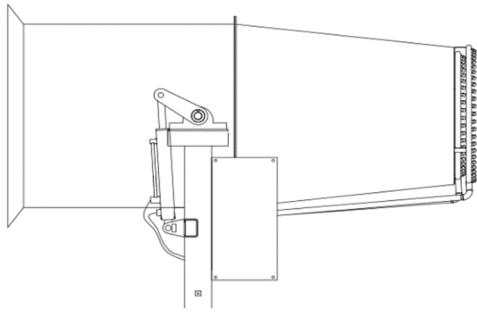
# MULTI-FUNCTIONAL DUST SUPPRESSION TRUCK



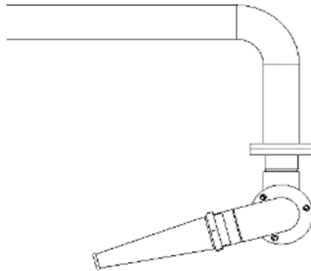
## Main Parameters

Items		FLM5180TDYDFBEV		FLM5250TDYDFBEV	
GVW	kg	18000	18000	25000	25000
Wheelbase	mm	5300	5300	5000+1350	5000+1350
Payload Weight	kg	6735	5355	9285	8335
Upper Weight	kg	2900	4280	4120	5070
Air Supply Type Sprayer Model		FW-CD60	FW-CD100	FW-CD60	FW-CD100
Max Spraying Range	m	60	100	60	100
Max Spraying Height	m	20	30	20	30
Spraying Mist Flow	L/min	30~55	0~160	30~55	0~160
Pressure Of Spraying Mist	MPa	2	2	2	2
Upper Transportation Dimensions	mm	FW-CD60:11776×2550×2660(40FR) FW-CD100:11776×2550×3110(40FR)		FW-CD60:11776×2550×2660(40FR) FW-CD100:11776×2550×3110(40FR)	
Max Working Speed	km/h	100		90	
Selectable Of Chassis Brand		DONGFENG		DONGFENG	
Sprayer Pitching Angle		-10°~60°		-10°~60°	
Horizontal Rotating Angle		-90°~90°		-90°~90°	
Sprinkler Pump Model		65QZB-50/110N		65QZB-50/110N	
Sprinkler Pump Flow	L/min	833		833	
Rinsing Width	m	≥24		≥24	
Sprinkling Width	m	≥16		≥16	
Water Tank Effective Volume	m <sup>3</sup>	11		11.58	
Noise	dB	≤82	≤88	≤82	≤88
Power Type		BEV		BEV	
Endurance Mileage	km	367		314.14	
Total Electricity Storage Capacity	kWh	314.14		250	

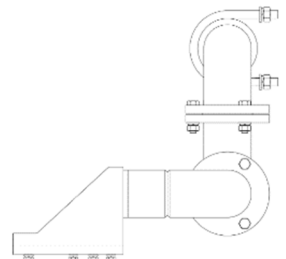
# Spray Nozzle



Air Supply Type Sprayer on rear work platform

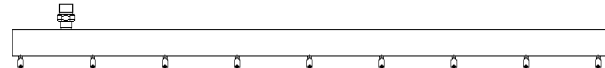


Middle cleaning device under tank

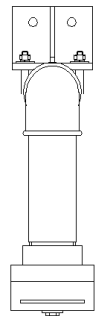


Front cleaning device under Cab

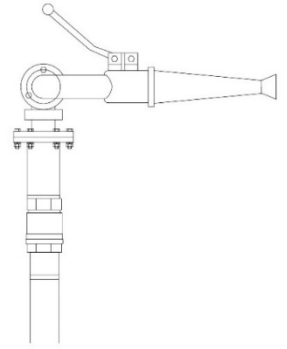
## Optional device



Low-pressure front cleaning device under Cab



Rear water sprinkling device under rear work platform



Rear mounted water sprayer on rear work platform

Device Data	
Low-pressure front cleaning device	2.5 m
Rear water sprinkling device	14 m
Rear mounted water sprayer	50 m

# Base Specification

### Water pump:

- The self-priming two-stage centrifugal pump is adopted, the pump is driven by the power of chassis engine, and the low-level flushing mode is the first one in China.

### Body:

- The switch control valve parts and sprinkler system pipes are made of corrosion-resistant materials, the tank body is made of Q235B steel plate, and the internal part is treated with special process, without corrosion.
- The structure layout is compact and reasonable, the tank volume is large, and the operation time is long.

## Hydraulic system:

- The dual hydraulic cylinder is used in the pitching system to make the spray equipment operate more smoothly, especially in the process of running along the side of the dust suppression truck. The structure of the double oil cylinder effectively guarantees the safety of the equipment.

## Control system:

- The whole vehicle adopts the advanced pneumatic system with high reliability and no pollution, which is convenient and flexible for operation.
- The electric control system of the self-made sprayer is controlled by the imported controller, which is controlled by the cockpit touch screen and the remote controller. It can control the direction, power output and working mode of the sprayer conveniently, and restraint the action limits of the sprayer to ensure the safety of the equipment.

## Mist sprayer:

- It adopts the environmental protection dust removal air delivery sprayer, compact structure, long range, small mist particles, large coverage area, can be operated manually or remotely. All operations can be carried out in the cab through the camera.
- The sprayer can rotate around the 90° by using the micro motor. The hydraulic system can control the pitch angle of -10° to 60°, and the speed of the transformation angle is fast and the working efficiency is high.
- The sprayer equipped with emergency stop button, safe and reliable operation.
- The spray system uses three-cylinder plunger high-pressure pump, the maximum pressure can reach 2MPa, which strengthens the atomization effect of spray operation. Ensure the range of the sprayer.

## Safety:

- The water tank is equipped with a low water level sensor alarm system, which can automatically alarm when the water level is low.

## Washing and cleaning device:

- It has the function of front sprinkling, which can not only be used for daily sprinkling, but also for humidification and dust reduction. It can also be used for road cleaning.
- Equipped with left and right middle column side impact device, the nozzle can be adjusted.

## Other advantages:

- 200 mesh high-precision water filter is adopted to effectively filter impurities in operation water and avoid nozzle blockage.
- The double wall muffler technology is adopted for the air duct to effectively reduce the operation noise of the air duct. The maximum noise of the whole vehicle is no more than 88dB.
- The pure electric dust suppression vehicle uses the synchronous motor controller to drive the asynchronous motor to achieve the function, and the system has a small intermediate power loss, which greatly extends the chassis endurance.
- The left and right slewing supports and lifting motors are driven by 24V voltage, which is convenient for troubleshooting.
- There are differences between the low-pressure sprinkling function key and the traditional operation mode. The operation is integrated in the operation panel. The sprinkling function key of the pure electric dust suppression vehicle is external. The two gear positioning switch is adopted, which is more convenient for the driver to operate.

## Optional device:

- Front installing low-pressure cleaning device.
- The rear of the car can be equipped with a water spray.
- Stainless steel tank can be selected.
- Main control of rear watering.
- FW-CD100 sprayer/FW-CD60 sprayer can be selected (Two choose one).

# Operation Instructions For Equipment To Disinfect

## 84 Disinfectant:

- The effective chlorine content will be shown on the label of 84 disinfectant mother liquor, for example, 1% represents 10,000 ppm. The amount of 84 disinfectant mother liquor to be added needs to be determined according to the final required concentration. Now take the FULONGMA brand 18-ton multi-function dust suppression truck as an example. The maximum capacity of tank is 10t, now we need mix the 84 disinfectant solution at 200 ppm. First add about 5 tons of water, and then evenly add the 84 disinfectant mother liquor with an effective chlorine content of 6% to the two front and rear mouths on the top of the tank, total weight is 33.33kg, and finally fill up with water. The added amount of 33.33kg of 84 disinfection mother liquor is calculated by the following formula:

$$G = VXC / 1000000 / d$$

Remark: G = adding amount of 84disinfection solution (unit :kg, 1kg ≈ 1L)

V = Water tank volume (Unit: kg)

C = required solution concentration (ppm)

D = Available chlorine content of 84 disinfection mother solution (%)

## Points for attention:

- 84 disinfectant is corrosive and irritating to the skin and oral mucosa. If it comes into direct contact with the original solution, there will be slight pain. The operator must do self-protection and wear appropriate equipment. Wearing gloves, masks, protective glasses, and work clothes (protective clothing should be worn if possible).
- 84 disinfectant is a chlorine-containing disinfectant, and chlorine is a volatile gas, so the container containing the disinfectant must be covered, otherwise the disinfection effect will not be achieved.
- Do not mix 84 disinfectant with other detergents or disinfectants, because this will increase the concentration of chlorine in the air and cause chlorine poisoning, which endangers life safety.
- Maintain proper ventilation in the driver's cab during driving. During spraying disinfection, spraying on people and animals is strictly prohibited.
- During the disinfection operation of the truck, pls use the sprayer at the maximum angle and the maximum wind force toward the air to achieve the widest disinfection range.
- In order to achieve the best disinfection and spraying effect, the working speed of the truck should be maintained at 5-10km / h.
- Because 84 disinfectant is corrosive to metal, it is not recommended to use this truck as disinfection and epidemic prevention equipment for a long time. During short-term use, it is normal to see a slight leak at the seal part of water pipe. If the water leakage is serious, replace the seal ring in time. As far as possible after each operation, water tanks and pipelines should be washed with clean water to prevent chemicals from corroding, including pipelines ,pump seals, tanks and pipeline parts.