

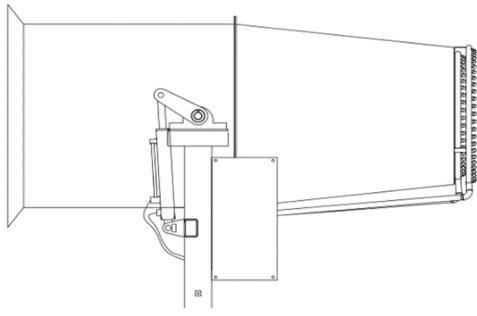
MULTI-FUNCTIONAL DUST SUPPRESSION TRUCK



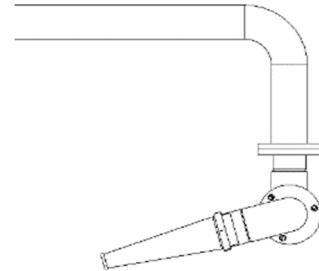
Main Parameters

Items		FLM5181TDYDG6
GVW	kg	18000
Wheelbase	mm	5300
Payload Weight	kg	7305
Upper Weight	kg	5400
Upper Transportation Dimensions	mm	11776×2550×3110(40FR)
Max Working Speed	km/h	105
Selectable Of Chassis Brand		DONGFENG
Auxiliary Engine Model		YCD4Y33T6-160
Auxiliary Engine Power	kw	117.7
Air Supply Type Sprayer Model		FW-Y100
Max Spraying Range	m	100
Max Spraying Height	m	30
Spraying Mist Flow	L/min	0~160
Pressure Of Spraying Mist	MPa	2
Sprayer Pitching Angle		-10°~60°
Horizontal Rotating Angle		-90°~90°
Sprinkler Pump Model		65QZB-50/110N
Sprinkler Pump Flow	L/min	833
Rinsing Width	m	≥24
Sprinkling Width	m	≥16
Water Tank Effective Volume	m ³	9.8
Noise	dB	≤88

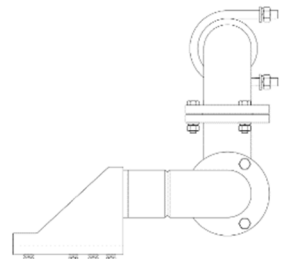
Spray Nozzle



Air Supply Type Sprayer on rear work platform



Middle cleaning device under tank

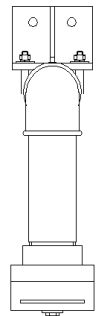


Front cleaning device under Cab

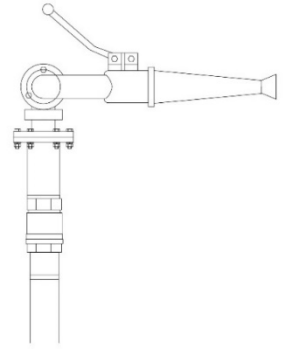
Optional device



Low-pressure front cleaning device under Cab



Rear water sprinkling device under rear work platform



Rear mounted water sprayer on rear work platform

Device Data	
Low-pressure front cleaning device	2.5 m
Rear water sprinkling device	14 m
Rear mounted water sprayer	50 m

Base Specification

Water pump:

- The auxiliary engine is YUCHAI National III emission engine, which drives the high-pressure hydraulic plunger pump to provide power for the working device of the whole vehicle.
- The low-pressure system adopts the self-priming double-stage centrifugal pump, the pump is driven by the chassis engine, and adopts the low level flushing mode which is the first in China.

Body:

- The structure layout is compact and reasonable, the tank volume is large, and the operation time is long.
- The switch control valve parts and sprinkler system pipes are made of corrosion-resistant materials, the tank body is made of Q235B steel plate, and the internal part is treated by special process, without corrosion. Stainless steel can bodies are also available.

Hydraulic system:

- The fan and water pump are driven by hydraulic motor, which can stepless adjust the speed of the fan, and control the range of the spray system by controlling the volume of the air. The fan motor and the low-pressure water pump motor are imported hydraulic components, ensuring the energy saving, stability, reliability, controllability and safety of the equipment.
- The hydraulic system of double hydraulic cylinder is used in the pitching system to make the spray equipment run more smoothly, especially in the process of running along the side of the dust suppression truck. The structure of the double oil cylinder effectively guarantees the safety of the equipment.

Mist sprayer:

- Adopt the environmental protection dust removal wind sprayer, compact structure, wide range, large coverage area, can be operated manually or remotely. All operations can be carried out in the cab through the camera.
- The sprayer can rotate around the 90° by hydraulic motor drive. The hydraulic system can control the pitch angle of -10° to 60°, and the speed of the transformation angle is fast and the working efficiency is high.

Safety:

- The water tank is equipped with a low water level sensor alarm system, which can automatically alarm when the water level is low.

Washing and cleaning device:

- It has the function of front sprinkling, which can not only be used for daily sprinkling, but also for humidification and dust reduction. It can also be used for road cleaning. The function of low-pressure front washing and rear sprinkling can be selected.
- Equipped with left and right middle column side impact device, the nozzle can be adjusted.

Other advantages:

- 200 mesh high-precision water filter is used to effectively filter impurities in operation water and avoid nozzle blockage.
- Double wall silencing technology is adopted for the air duct to effectively reduce the operation noise of the air duct.
- The air duct control is intelligent, which can realize automatic return to the middle, automatic left and right circulation operation and other functions.

Control system:

- The whole vehicle adopts the advanced pneumatic system with high reliability and no pollution, which is convenient and flexible for operation.

Optional device:

- Front installing low-pressure cleaning device.
- The rear of the car can be equipped with a water spray.
- Stainless steel tank can be selected.
- Main control of rear watering.

Operation Instructions For Equipment To Disinfect

84 Disinfectant:

- The effective chlorine content will be shown on the label of 84 disinfectant mother liquor, for example, 1% represents 10,000 ppm. The amount of 84 disinfectant mother liquor to be added needs to be determined according to the final required concentration. Now take the FULONGMA brand 18-ton multi-function dust suppression truck as an example. The maximum capacity of tank is 10t, now we need mix the 84 disinfectant solution at 200 ppm. First add about 5 tons of water, and then evenly add the 84 disinfectant mother liquor with an effective chlorine content of 6% to the two front and rear mouths on the top of the tank, total weight is 33.33kg, and finally fill up with water. The added amount of 33.33kg of 84 disinfection mother liquor is calculated by the following formula:

$$G = VXC / 1000000 / d$$

Remark: G = adding amount of 84disinfection solution (unit :kg, 1kg ≈ 1L)

V = Water tank volume (Unit: kg)

C = required solution concentration (ppm)

D = Available chlorine content of 84 disinfection mother solution (%)

Points for attention:

- 84 disinfectant is corrosive and irritating to the skin and oral mucosa. If it comes into direct contact with the original solution, there will be slight pain. The operator must do self-protection and wear appropriate equipment. Wearing gloves, masks, protective glasses, and work clothes (protective clothing should be worn if possible).
- 84 disinfectant is a chlorine-containing disinfectant, and chlorine is a volatile gas, so the container containing the disinfectant must be covered, otherwise the disinfection effect will not be achieved.
- Do not mix 84 disinfectant with other detergents or disinfectants, because this will increase the concentration of chlorine in the air and cause chlorine poisoning, which endangers life safety.
- Maintain proper ventilation in the driver's cab during driving. During spraying disinfection, spraying on people and animals is strictly prohibited.
- During the disinfection operation of the truck, pls use the sprayer at the maximum angle and the maximum wind force toward the air to achieve the widest disinfection range.
- In order to achieve the best disinfection and spraying effect, the working speed of the truck should be maintained at 5-10km / h.
- Because 84 disinfectant is corrosive to metal, it is not recommended to use this truck as disinfection and epidemic prevention equipment for a long time. During short-term use, it is normal to see a slight leak at the seal part of water pipe. If the water leakage is serious, replace the seal ring in time. As far as possible after each operation, water tanks and pipelines should be washed with clean water to prevent chemicals from corroding, including pipelines ,pump seals, tanks and pipeline parts.