

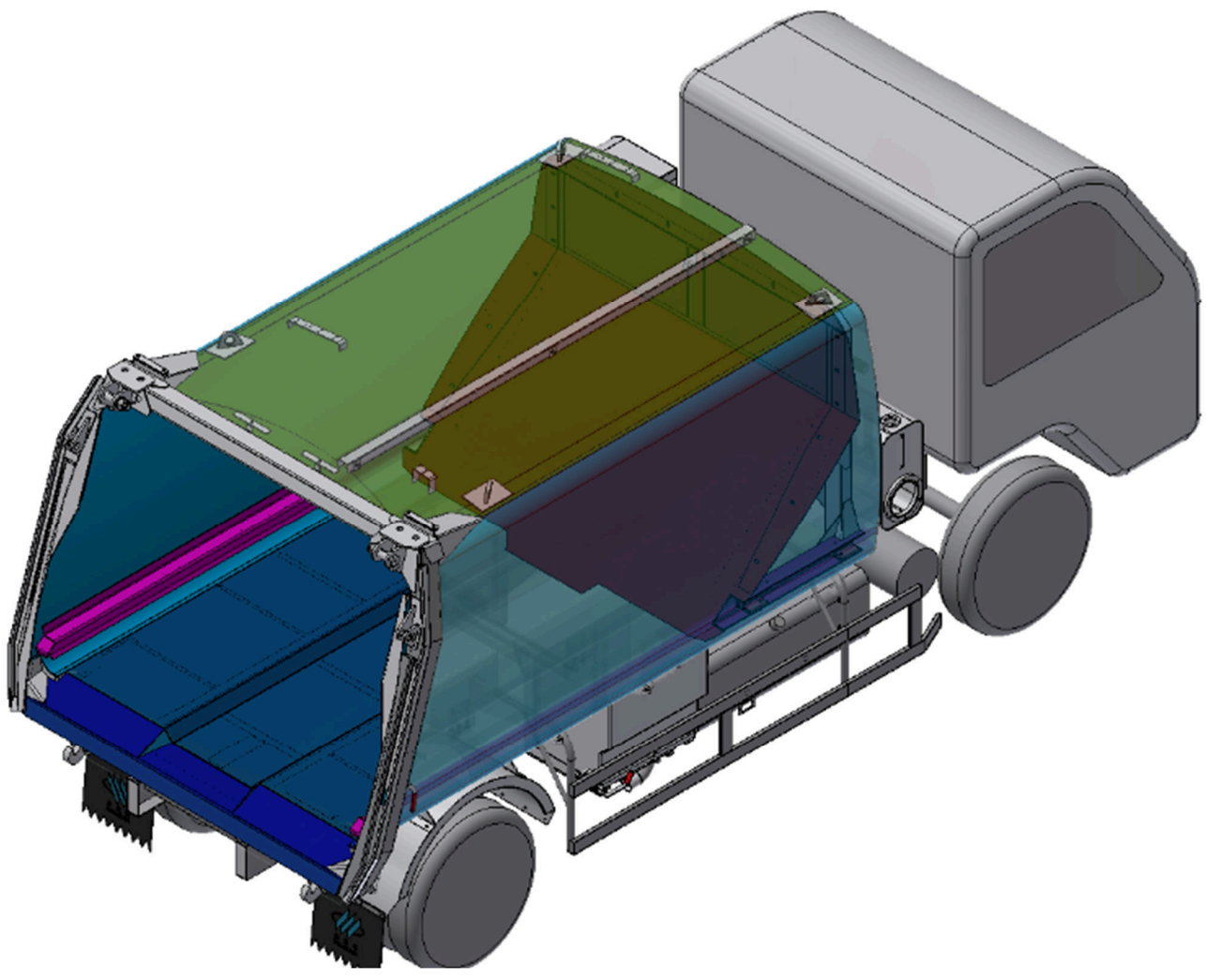
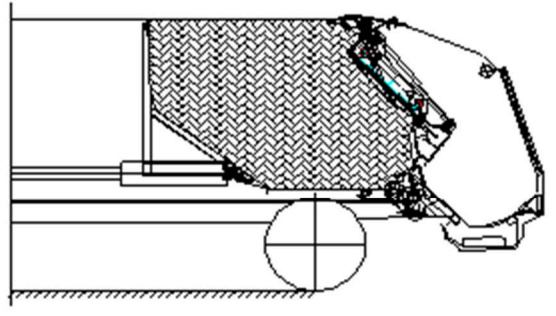
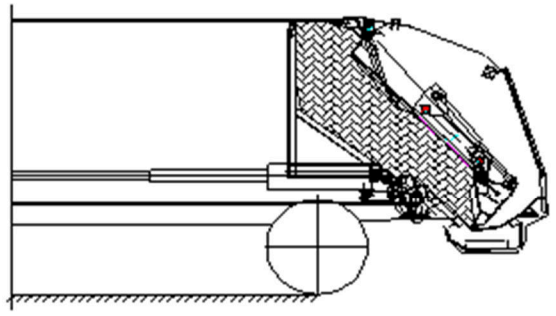
# COMPRESSION REFUSE COLLECTOR









## Main Parameters

Items			FLM5120ZYSD6K	FLM5180ZYSD6K
GVW	kg		12490	18000
Payload Weight	kg		2705	7355
Wheelbase	mm		3800	4500
Upper Weight	kg		4440	4850
Upper Transportation Dimensions	Garbage Box	mm	4665×2450×2200	5015×2500×2210
	Hopper	mm	3515×2450×1480	3660×2500×1730
Selectable Of Chassis Brand			DONGFENG	DONGFENG/JAC/FAW
Hopper Volume	m <sup>3</sup>		1.1	1.1
Hopper Opening Width	mm		1870	1870
Hopper Bottom Above Floor (Unladen)	mm		≤1280	≤1280
Refuse Container Capacity	m <sup>3</sup>		10.5	12.5
Waste Water Tank	L		710	905
Garbage Compression Density	t/m <sup>3</sup>		0.65-0.8	0.65-0.8
Hydraulic System Working Pressure	MPa		21	21
Loading Recycle Time	s		≤17	≤17
Lifting Recycle Time	s		≤11	≤11
Discharging Time	s		≤50	≤55
Max Shirking Force	kN		187	187
Max Crush Compressing Force	kN		162	162
Compression Frame			Bi-directional Compression	Bi-directional Compression

# Technical Specification



-  Left board & right board & front of base plate
-  Top plate
-  Guide rail
-  Push plate
-  Rear base plate
-  Push plate slide groove

# Base Specification

## Body:

- The U-shaped truss slot with high strength and Japanese technology is used as the movable guide rail of garbage pushing plate, which has strong compression capacity and good deformation resistance.
- The dustbin and other main components are made of B480GNQR high-strength weathering steel plate produced by Shanghai BAOSTEEL, and arc-shaped design is adopted, which is simple and beautiful, with large effective volume, outstanding overall structural performance and strong impact resistance.
- The sliding block of push plate is made of high wear-resistant alloy material with long service life.

## Control system:

- The intelligent control system of controller is adopted, which can be controlled centrally in the cab. With automatic and manual double control mode, it can control the garbage truck operation in the cab, the middle of the car, the back of the car, etc., which is convenient and efficient.
- The opening of the filler is provided with a sealing cover plate. The opening and closing of the cover plate are pneumatically controlled and easy to operate, which can effectively prevent the secondary pollution of garbage and odor.

## Hydraulic system:

- Equipped with t Bi-directional Compression function, high compression efficiency and large garbage load. When unloading, when the filler is lifted in place, the scraper and sliding plate automatically realize a cycle to clean up the garbage left in the filler.

## Other advantages:

- Equipped with a large capacity sewage tank and combined with a diversion sewage collection device, the sewage leakage between the filler and the garbage box due to the failure of the sealing strip can be drained into a special sewage collection box, effectively preventing the secondary pollution caused by the sewage leakage.
- The joint of the stuffing machine and the box body adopts the adjustable hydraulic locking full sealing technology, with good sealing performance.
- It is equipped with many safety protection measures, such as slider up, scraper up button, emergency stop button, interlock switch to prevent the stuffer from falling, safety strut, self-locking function of the lifter cylinder of the stuffer, to ensure the safety of personnel.
- Equipped with night work lights, convenient for sanitation workers to work at night.

## Optional device:

- According to the needs of users, equipped with all kinds of garbage lifting devices. The well-designed lifting support makes it possible to configure a variety of lifting devices.
- Stainless steel sewage tank (one on the left and one on the right).
- Aluminum alloy side guardrail is installed.
- Optional pressure switch of scraper and sliding plate.
- Optional German chute with slider.
- FLM5180ZYSD6K:
  1. Double pump continuous dual power is selected to cancel the sewage tank on the right side.
  2. Continuous dual power (single pump) or non-continuous dual power (single pump) is optional, and the sewage tank on the right side is cancelled.
  3. Disinfection equipment.